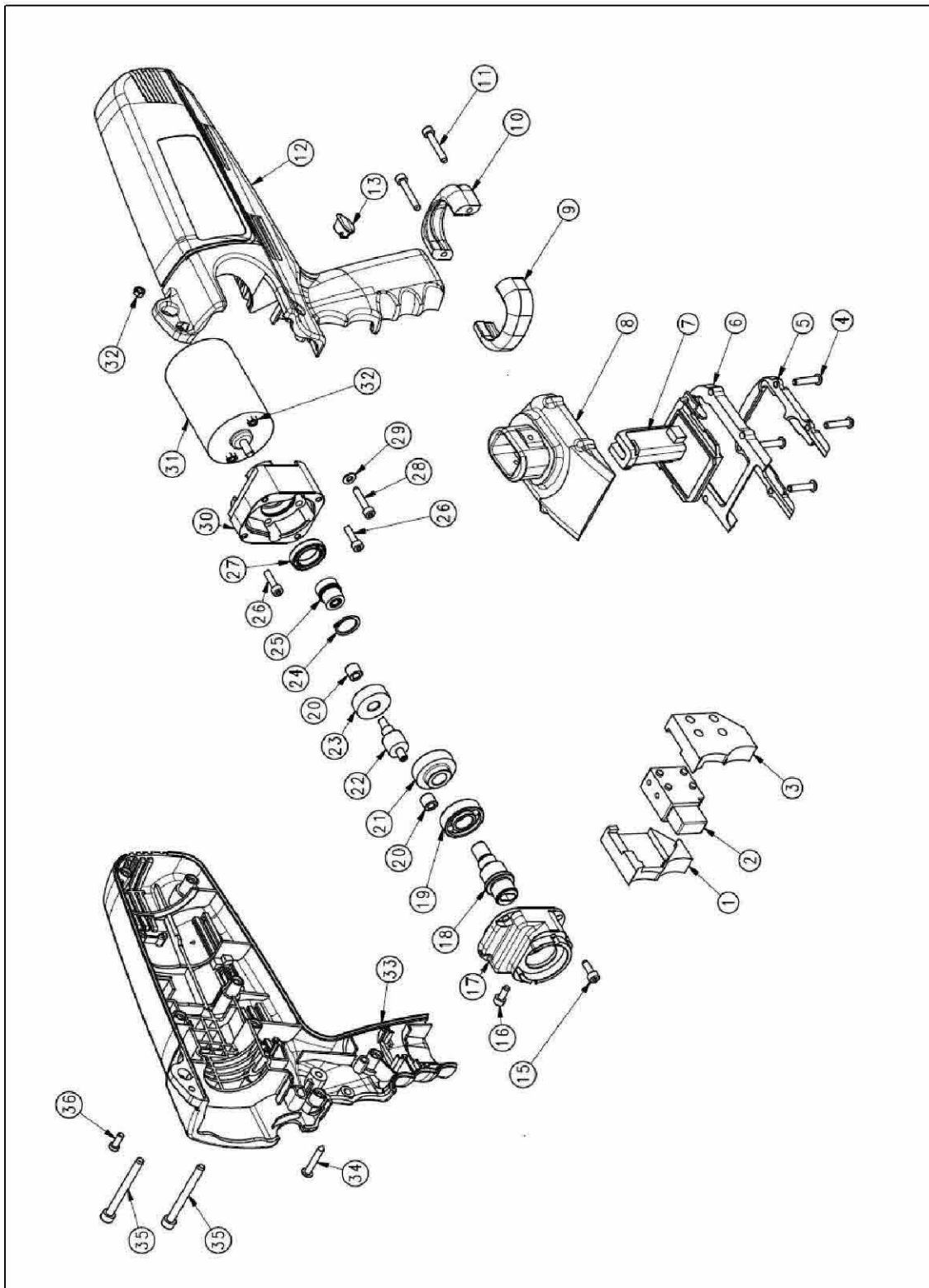


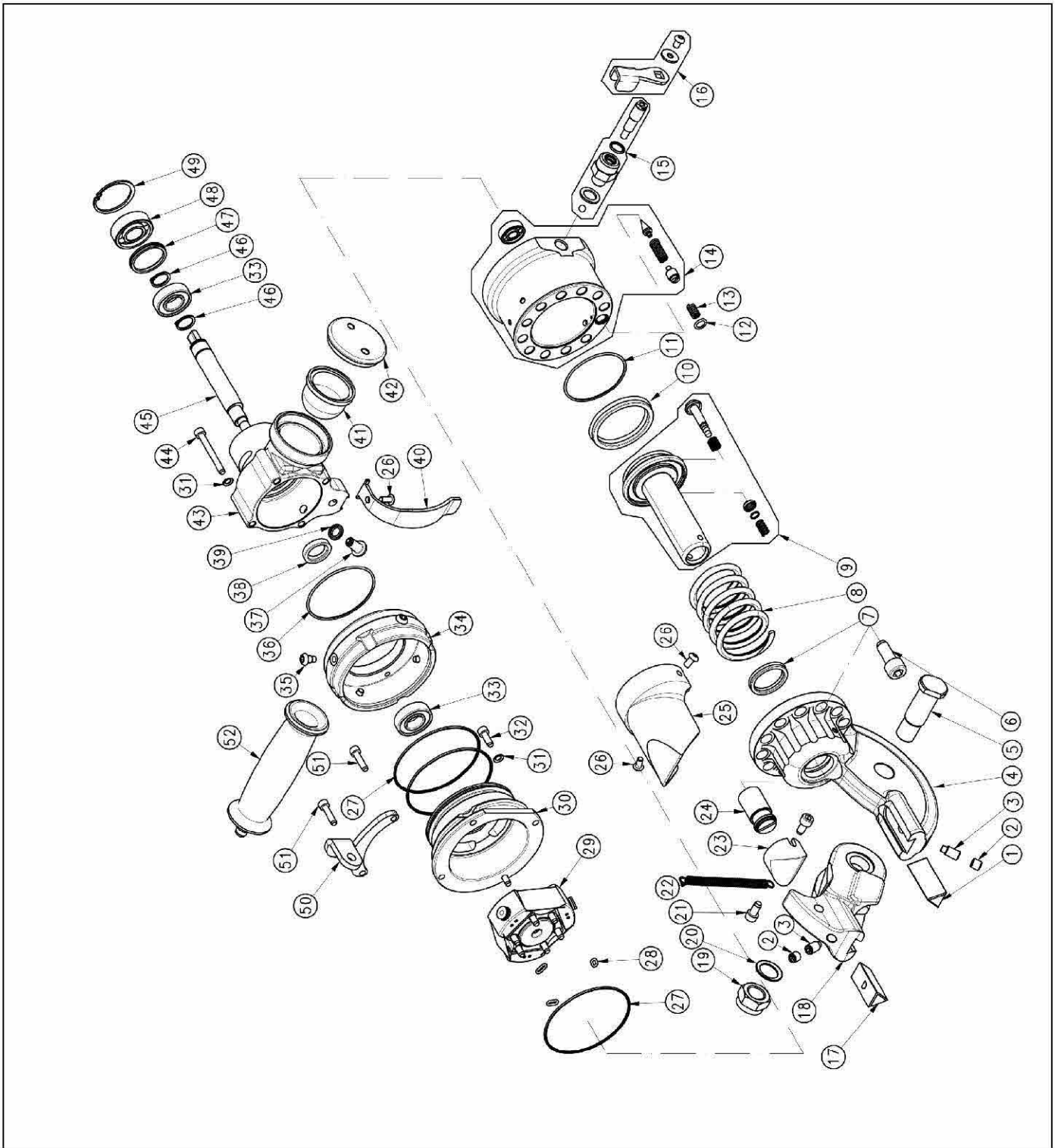
Cordless cutter MU16 - ELECTRIC PART - assy P/N 150.02748



Cordless cutter MU16 - ELECTRIC PART - assy P/N 150.02748

#	P/N	Rev.	Item	Q.ty
1	1.10.5327	2	SWITCH HOUSING RIGHT	1
2	1.40.020	1	SWITHC	1
3	1.10.5326	1	SWITCH HOUSING LEFT	1
4	1.60.1228	0	SCREW	4
5	1.10.6864	5	LOWER SLIDE BATTERY HOUSING	1
6	1.10.6861	4	UPPER SLIDE BATTERY HOUSING	1
7	1.40.597	0	ELECTRONIC BOARD	1
8	1.10.6860	3	BATTETY HOOKING	1
9	1.10.7019	3	FRONT HALF-WASHER	1
10	1.10.7018	3	REAR HALF-WASHER	1
11	1 60 793	0	SCREW	2
12	1.10.7190	0	LEFT HALF-SHELL	1
13	1.30.342	0	CUP	1
15	1 60 498	0	SCREW	4
16	1.60.107	1	SCREW	1
17	1.10.4467	7	UPPER SHELL GREAR BOX	1
18	1.10.4421	4	TRANSMISSION SHAFT	1
19	1.60.082	0	BEARING	1
20	1.10.980	2	BUSHING	2
21	1.10.973	2	TOOTHED CROWN	1
22	1.10.974	2	TOOTHED PINION	1
23	1.10.977	3	TOOTHED CROWN	1
24	1.60.396	0	CIRCLIP	1
25	1.10.5008	0	PINION	1
26	1.60.141	1	SCREW	2
27	1.60.3043	0	BEARING	1
28	1 60 729	0	SCREW	2
29	1 60 319	0	WASHER	2
30	1.10.4466	7	LOWER SHELL GREAR BOX	1
31	1.40.909	0	ELETTRIC MOTOR	1
32	1.60.207	0	NUT	3
33	1.10.7191	0	RIGHT HALF-SHELL	1
34	1.70.025	1	SCREW	7
35	1 60 2019	0	SCREW	2
36	1.60.753	0	SCREW	1

EXPLODED VIEW – MU16 BATTERY CUTTER P/N 150.02752
Cordless MU16 – Hydraulic parts – assy P/N 150.02549



EXPLODED VIEW – MU16 BATTERY CUTTER P/N 150.02752
Cordless MU16 – Hydraulic parts – assy P/N 150.02549

#	P/N	Rev.	Item	Q.ty
1	1.10.233	2	LOWER BLADE	1
2	1.60.829	1	SCREW	2
3	1.60.2056	0	SCREW	2
4	1.10.3557	6	HEAD HOLDER BLADE	1
5	1.10.3559	2	PIN	1
6	1 60 112	0	SCREW	11
7	1.30.070	0	GASKET	1
8	1.10.231	0	RETURN PISTON SPRING	1
9	1.50.619	0	PISTON	1
10	1.30.032	0	GASKET	1
11	1.30.045	2	O-RING	1
12	1.30.225	2	O-RING	1
13	1.10.248	1	SPRING	1
14	1.50.1942	0	CYLINDER	1
15	1.50.1932	0	RELEASE VALVE (VALVE GROUP)	1
16	1.50.1933	1	RELEASE VALVE (LEVER GROUP)	1
17	1.10.269	2	UPPER BLADE	1
18	1.10.3558	5	MOBILE HEAD	1
19	1.60.201	0	NUT	1
20	1.60.900	0	WASHER	1
21	1 60 3013	0	SCREW	2
22	1.10.230	0	SPRING	1
23	1.10.624	2	PUSHING CAM	1
24	1.10.579	1	ADJUSTMENT SCREW	1
25	1.30.546	1	SAFETY COVER	1
26	1.60.937	1	SCREW	3
27	1.30.046	2	O-RING	3
28	1.30.017	2	O-RING	3
29	1.50.511	0	PUMP (ASSY)	1
30	1.10.6809	4	ROTATION SUPPORT	1
31	1.60.410	0	WASHER	6
32	1.60.3094	0	SCREW	2
33	1.60.079	0	BEARING	2
34	1.10.6815	2	EXTERNAL RING FOR ROTATION	1
35	1.10.6818	0	SCREW	4
36	1.30.425	0	O-RING	1
37	1.50.923	2	MAGNETIC CUP	1
38	1.60.083	0	OIL SEAL	1
39	1.60.3046	0	BONDED SEAL	1
40	1.10.4962	4	SWITCH PROTECTION	1
41	1.30.296	0	MEMBRANE	1
42	1.10.1871	0	MEMBRANE CUP	1
43	1.10.4423	4	OIL TANK	1
44	1 60 811	0	SCREW	4
45	1.10.6813	0	ECCENTRIC SHAFT	1
46	1.60.396	0	CIRCLIP	2
47	1.10.4625	1	THICKNESS	1
48	1.60.3039	0	BEARING	1
49	1.60.3045	2	CIRCLIP	1
50	1.10.6817	1	HANDLE SUPPORT	1
51	1.60.105	0	SCREW	2
52	1.50.618	2	GRIP	1