

3

MANUAL

EDILGRAPPA
ELECTRIC STRAND CUTTER
TW19
SPARE PARTS

INDEX

0 SPARE PARTS AND ACCESSORIES CATALOGUE	3
0.01 ORDERING INFORMATION	3
0.02 MECHANICAL AND ELECTRICAL COMPONENTS	3
ELECTRIC STRAND CUTTER TW19 COMPONENTS	4
P/N 1.50.127	4

0 SPARE PARTS AND ACCESSORIES CATALOGUE



THE COMPANY DECLINES ALL LIABILITY FOR INJURY TO PEOPLE OR DAMAGE TO PROPERTY IF TECHNICAL ASSISTANCE IS NOT PERFORMED BY QUALIFIED AND AUTHORISED STAFF.



FOR TECHNICAL ASSISTANCE AND MAINTENANCE, CONTACT AN AUTHORISED SERVICE CENTRE OR WRITE TO cut@edilgrappa.com.

0.01 ORDERING INFORMATION

For technical assistance and spare parts, both during and after the period of warranty, quote the data indicated on the ID plates and the serial number punched on the tool body (fig. 1)

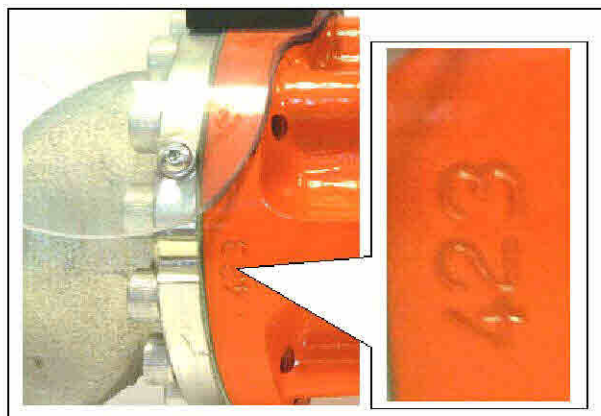


Fig. 1

Orders for spare parts must be accompanied by the following information:

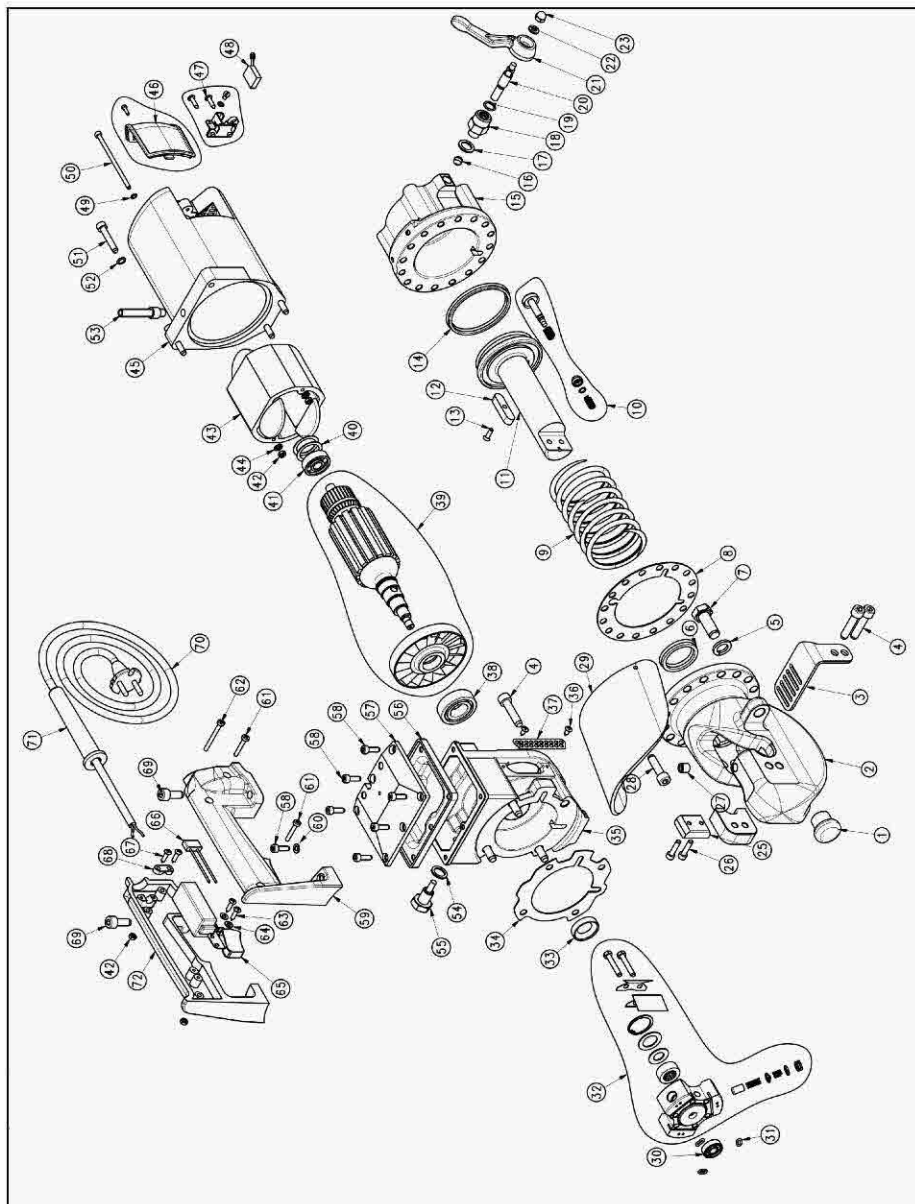
1. Type of equipment
2. Serial number
3. Part number or position in exploded drawing
4. Quantity
5. Revision status indicated on the back cover of the manual.

The Manufacturer can only supply the appropriate spare part if the required data is complete, since subsequent improvements may have entailed structural variations to the equipment and therefore to the spare parts.

0.02 MECHANICAL AND ELECTRICAL COMPONENTS

The following page contains an exploded diagram of the machine, complete with the part numbers, descriptions and quantities of each component

ELECTRIC STRAND CUTTER TW19 COMPONENTS
P/N 1.50.127



ELECTRIC STRAND CUTTER TW19 COMPONENTS

P/N 1.50.127

Pos.	P/N	Item	Q.ty
1	1.10.2369	CHECK BRACKET	1
2	1.10.2223	HEAD	1
3	1.10.5122	STAINLESS STEEL GUARD	1
4	1 60 101	SCREW	6
5	1.60.401	SPRING WASHER	1
6	1.30.006	GASKET	1
7	1.60.106	SCREW	1
8	1.30.013	GASKET	1
9	1.10.091	SPRING	1
10	1.50.554	TRAVEL STOP VALVE	1
11	1.10.2222	PISTON	1
12	1.60.001	TONGUE	1
13	1.60.862	SCREW	1
14	1.30.003	GASKET	1
15	1.10.3776	CYLINDER	1
16	1.60.012	STEEL BALL-BEARING	1
17	1.60.307	COPPER WASHER	1
18	1.10.032	MANUAL RETURN VALVE BODY	1
19	1.30.015	O-RING	1
20	1.10.029	PIN FOR MANUAL RETURN VALVE	1
21	1.10.141	OIL OPENING LEVER	1
22	1.60.302	WASHER	1
23	1.60.205	BLIND NUT	1
24	1.10.138	FIXED BLADE	1
25	1.10.2651	MOBILE BLADE	1
26	1 60 105	SCREW	2
27	1.60.108	SCREW	1
28	1 60 109	SCREW	16
29	1.10.5124	TRANSPARENT RUBBER GUARD	1
30	1.60.068	BEARING	1
31	1.30.017	O-RING	3
32	1.50.511	PUMP ASSEMBLY	1
33	1.60.014	OIL GUARD	1
34	1.30.014	TANK GASKET	1
35	1.10.094	TANK	1
36	1.60.124	SELF-TAPPING SCREW	4
37	1.30.007	MOTOR AIR INLET GUARD	2
38	1.60.013	BEARING	1
39	200.005	ROTOR ASSEMBLY WITH FAN	1

Pos.	P/N	Item	Q.ty
40	1.60.324	ADJUSTING RING	2
41	1.60.003	BEARING	1
42	1 60 207	NUT	5
43	1.40.003	STATOR	1
44	1.60.382	WASHER	2
45	1.30.002	MOTOR COVER	1
46	1.50.1392	BRUSH COVER ASSEMBLY	2
47	1.50.1935	BRUSH HOLDER KIT	2
48	1.30.005	MOTOR BRUSH	2
49	1.10.811	WASHER	2
50	1.10.213	SCREW	2
51	1 60 133	SCREW	4
52	1.60.303	WASHER	4
53	1.30.030	PLASTIC CABLE GROMMET	1
54	1.60.337	CAP GASKET	1
55	1.50.227	MAGNETIC CAP	1
56	1.10.093	RUBBER MEMBRANE	1
57	1.10.376	COVER	1
58	1 60 123	SCREW	8
59	1.30.019	LH HALF-SHELL	1
60	1 60 308	WASHER	2
61	1.60.126	SCREW	2
62	1.60.127	SCREW	1
63	1.60.128	SELF-TAPPING SCREW	2
64	1 60 319	WASHER	2
65	1.40.001	SWITCH	1
66	1.40.002	ANTI-DISTURBANCE FILTER	1
67	1.60.129	SELF-TAPPING SCREW	2
68	1.30.020	PLASTIC CABLE CLAMP	1
69	1 60 110	SCREW	2
70	1.40.012	CABLE WITH PLUG	1
71	1.30.021	CABLE HOLDER	1
72	1.30.018	RH HALF-SHELL	1

NOTES

EDILGRAPPA Srl

MACHINES AND EQUIPMENT FOR THE BUILDING TRADE, INDUSTRY
AND RESCUE

31030 BORSO DEL GRAPPA (TV) - ITALY - Via Callesello, 4
Tel. 0423 910122 – Fax 0423 542122

E-mail: cut@edilgrappa.com <http://www.edilgrappa.com>