

Parts List

8111.281 Sandy



Table of Contents

Introduction	2
Specially approved products.....	2
Product Description	3
Products included.....	3
The data plate.....	3
Exploded Views	4
8111.281.....	4
Spare Parts	5
8111.281.....	5

Introduction

Purpose of this manual

The purpose of this manual is to provide necessary information on spare parts and accessories order.

Disclaimer

Always use genuine Grindex parts. The use of other spare parts or accessories can invalidate any claims for warranty or compensation. Grindex does not take any responsibility for damages that are caused by the use of non-original parts. For more information, contact your local sales and service representative.

Data for ordering spare parts

The following information is needed for spare part orders:

- Serial number of the product
- Part number
- Quantity of bulk material, see * in tables

Specially approved products

Qualification of personnel

Only Grindex or Grindex-authorized service personnel may undertake repair work on Ex-approved products.

Dimensional accuracy inspection

Spare parts marked with (Ex) after the part number are subject to dimensional accuracy inspection.

Product Description

Products included

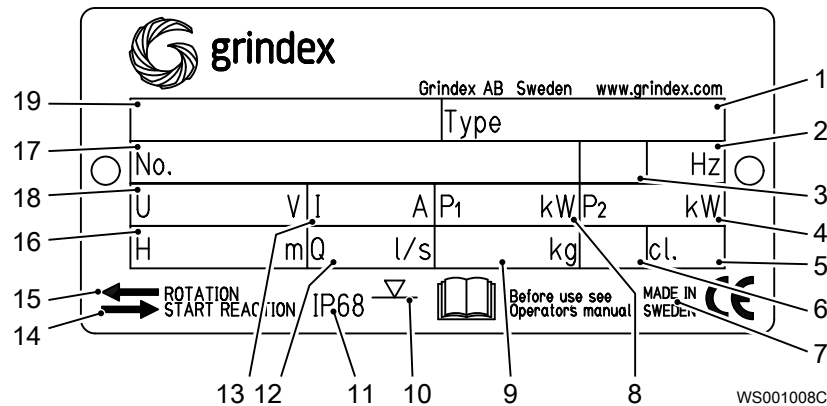
Pump model	Standard	EX	MSHA	Drainage	Sludge
Sandy 8111.281	X				X

The data plate

Introduction

The data plate is a metal label located on the main body of the pump. The data plate lists key product specifications.

The data plate

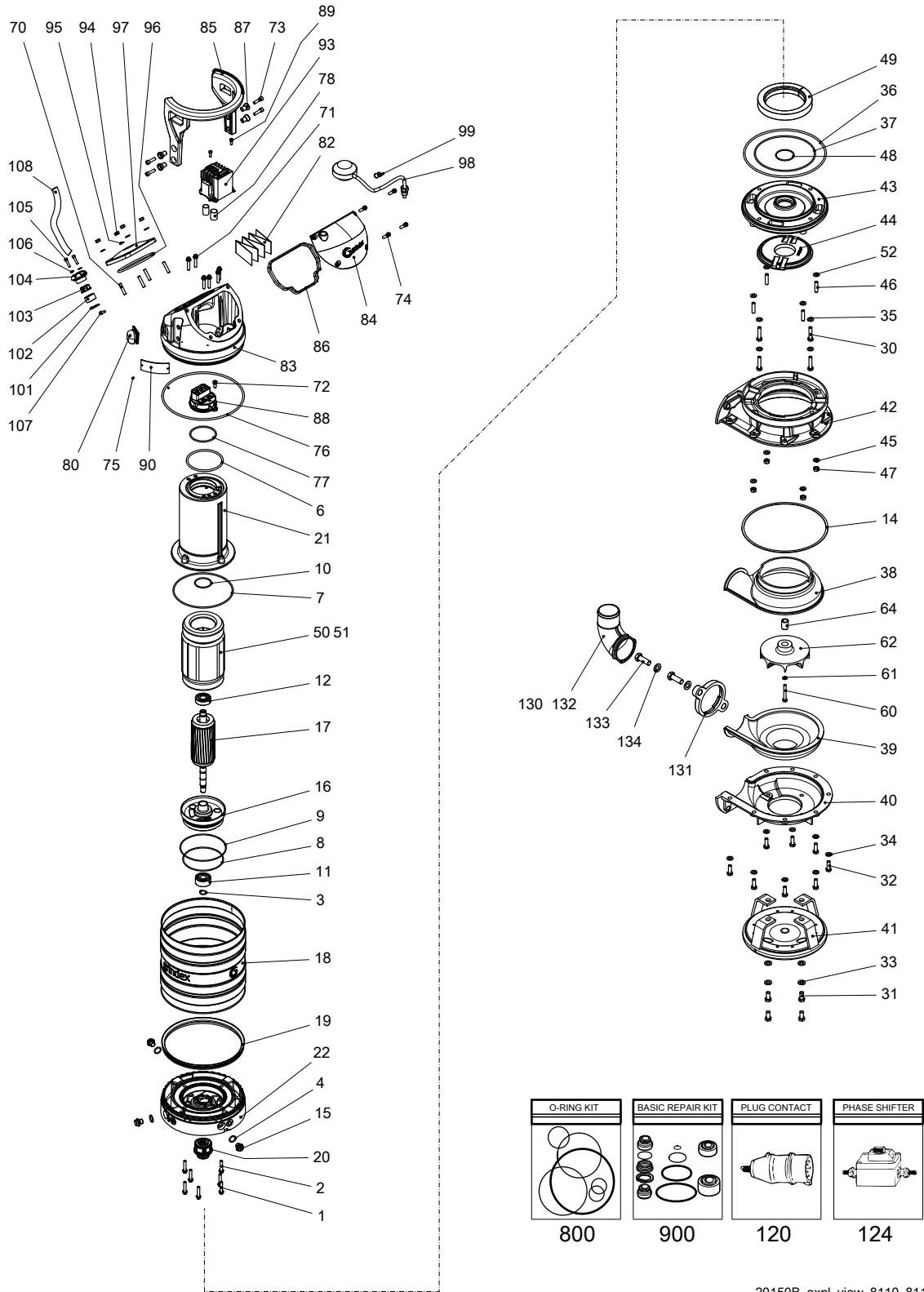


1. Pump type number
2. Frequency
3. Phases, type of current
4. Rated shaft power
5. Thermal class
6. Locked rotor code-letter
7. Country of origin
8. Maximum power consumption
9. Product weight
10. Maximum submersion depth
11. Degree of protection
12. Maximum capacity
13. Rated current
14. Direction of the start reaction
15. Direction of the impeller rotation
16. Maximum head
17. Serial number
18. Rated voltage
19. Pump model

Product approvals for hazardous locations

Exploded Views

8111.281



20150B_expl_view_8110_8111_281

Spare Parts

8111.281

Pos. No	Part. No	Denomination	Qty/Version
			281
1	410 533	Hexagon flange screw M8X40-A2-70	4
2	410 533	Hexagon flange screw M8X40-A2-70	3
3	50 278 02	Retaining ring SGA 20	1
4	410 487	O-ring 19.2X3 FPM	3
6	410 882	O-ring 114.3X5.7 NBR	1
7	410 021	O-ring 192.0X4.0 NBR	1
8	410 018	O-ring 129.5X3 NBR	1
9	140 377	O-ring 144.5X3.0 NBR	1
10	410 023	O-ring 52.5X3.0 FPM	1
11	410 031	Ball bearing 20X52X22.2 MM	1
12	50 287 04	Ball bearing 20X52X15 MM	1
13	410 053	Oil ISO VG 32	*
14	131 544	Gasket	1
15	133 063	Inspection screw	3
16	50 950 00	Bearing housing	1
17	50 903 03	Shaft unit	1
18	50 858 00	Cooling jacket	1
19	50 987 00	Seal ring	1
20	51 760 51	Mechanical seal	1
20,1	410 082	Retaining ring	1
21	51 750 00	Stator housing	1
22	50 951 01	Adapter	1
23	50 136 00	Instruction label	1
30	410 072	Hexagon head screw M10X45-A2-70	4
31	131 553	Hexagon head screw M12X25-A2-70	4
32	410 004	Hexagon head screw M10X30-A2-70	8
33	132 274	Plain washer 12-A2-170	4
34	50 022 26	Plain washer 10-A4-170HV	8
35	50 022 26	Plain washer 10-A4-170HV	4
36	132 415	O-ring 259.3X5.7 NBR	1

Pos. No	Part. No	Denomination	Qty/Version
			281
37	410 892	O-ring 192X4.0 FPM	1
38	50 153 03	Wear protection UPPER	N Diffusor material: Polyurethane rubber (PU)
38	50 153 02	Wear protection	H Diffusor material: Polyurethane rubber (PU)
39	50 154 01	Wear protection	N Diffusor material: Polyurethane rubber (PU)
39	50 154 02	Wear protection	H Diffusor material: Polyurethane rubber (PU)
40	50 155 00	Pump housing	1
41	131 551	Stand complete	1
42	131 559	Pump housing upper	1
43	51 097 00	Seal housing cov.coa	1
44	51 769 00	Guide plate	1
45	50 022 26	Plain washer 10-A4-170HV	4
46	410 170	Stud M10X28-A2-70	4
47	50 022 22	Hexagon nut M10-A4-70	4
48	410 083	O-ring 57.5X3.0 FPM	1
49	410 041	Pressure equalizer L=510 MM	1
50	50 980 06	Stator 15-14-2b	6-leads 3-phase 60 Hz 2- poles 200V-208V D
50	50 980 04	Stator 15-14-2b	6-leads 3-phase 50 Hz 2- poles 220V-240V D 3-phase 50Hz 380V-400V Y 3-phase 60Hz 440V-480V Y
50	50 980 05	Stator 15-14-2b	6-leads 3-phase 60 Hz 2- poles 380V Y 6-leads 3-phase 60 Hz 2- poles 220V-240V D
50	50 980 03	Stator 15-14-2b	9-leads 3-phase 60 Hz 2- poles 220V-240V Y// 9-leads 3-phase 60 Hz 2- poles 440V-480V YSER
50	50 980 12	Stator 15-14-2b	12-leads 3-phase 60 Hz 2- poles 220V-230V D// 12-leads 3-phase 60 Hz 2- poles 380V-400V Y// 12-leads 3-phase 60 Hz 2- poles 440V-460V DSER
50	50 980 00	Stator 15-14-2b	6-leads 3-phase 50 Hz 2- poles 660V-690V Y 6-leads 3-phase 50 Hz 2- poles 380V-400V D 6-leads 3-phase 60 Hz 2- poles 440V-480V D

Pos. No	Part. No	Denomination	Qty/Version	
			281	
50	50 980 13	Stator 15-14-2b	3-leads 3-phase 50 Hz 2-poles 380V-400V Y 3-leads 3-phase 60 Hz 2-poles 440V-480V Y	1
50	50 980 02	Stator 15-14-2b	3-phase 60Hz 380V-400V D	1
50	50 980 01	Stator 15-14-2b	6-leads 3-phase 50 Hz 2-poles 415V-440V D	1
50	50 980 07	Stator 15-14-2b	6-leads 3-phase 50 Hz 2-poles 500V D 6-leads 3-phase 60 Hz 2-poles 575V-600V D	1
50	50 980 15	Stator 15-14-2b	3-leads 3-phase 50 Hz 2-poles 500V Y 3-leads 3-phase 60 Hz 2-poles 575V-600V Y	1
50	50 980 08	Stator 15-14-2b	3-phase 50Hz 525V-550V D	1
50	50 980 09	Stator 15-14-2b	6-leads 3-phase 50 Hz 2-poles 1000V Y	1
51	410 033	Closed-end splice 4.0-9.0 (AWG 8) L=28	9-leads 3-phase 60 Hz 2-poles 220V-240V Y// 12-leads 3-phase 60 Hz 2-poles 380V-400V Y//	1
51	410 033	Closed-end splice 4.0-9.0 (AWG 8) L=28	9-leads 3-phase 60 Hz 2-poles 220V-240V Y// 12-leads 3-phase 60 Hz 2-poles 380V-400V Y//	2
51	410 034	Closed-end splice 3-6(AWG 12-10) L=18	9-leads 3-phase 60 Hz 2-poles 440V-480V YSER	3
52	130 896	Gasket		4
60	410 006	Hexagon head screw M8X60-A4-80		1
61	50 021 38	Plain washer 8-A4-170HV		1
62	50 859 00	Impeller	N 50Hz 3-phase Max ambient temp=40 DC	1
62	50 859 01	Impeller	N 60Hz 3-phase Max ambient temp=40 DC	1
62	51 098 00	Impeller	H 50Hz 3-phase Max ambient temp=40 DC	1
62	51 098 01	Impeller	H 60Hz 3-phase Max ambient temp=40 DC	1
64	51 751 00	Sleeve unit		1
70	50 021 13	Stud		4
71	410 533	Hexagon flange screw M8X40-A2-70		6
72	140 050	Hex.socket hd screw M8X30-A2-70		1

Pos. No	Part. No	Denomination	Qty/Version
			281
73	140 050	Hex.socket hd screw M8X30-A2-70	4
74	140 050	Hex.socket hd screw M8X30-A2-70	4
75	410 000	Drive screw 4X5-A2/A4	2
76	132 415	O-ring 259.3X5.7 NBR	1
77	410 623	O-ring 78X4 NBR	1
78	410 770	Insulating hose D=18 MM	*
80	50 869 00	Air release valve	1
81	51 800 00	Sticker	1
82	51 673 00	Connection plate	1
83	51 753 00	Main cover	1
84	51 761 00	Cover	1
84	51 761 01	Cover	1
85	51 762 00	Handle	1
86	51 763 00	Gasket	1
87	51 765 00	Sleeve	4
88	51 764 00	Terminal plate unit	1
		3-phase Max 19A	
88	51 764 04	Terminal plate unit	1
		Max 25A 3-phase	
88	51 764 01	Terminal plate unit	1
		3-phase	
89	410 889	Hex.socket hd screw M6X16-A2-70	2
90	50 888 00	Plate-blank	1
91	50 992 00	Sticker CUT HAZARD	1
93	51 767 17	Contactor unit	1
		Contactor unit 50Hz 3- phase 220V - 240V Not CSA approved	
93,1	51 768 00	Holder	1
93,4	51 511 07	Motor protector SMART	1
93,5	410 764	Contactor	1
93,6	50 018 00	Hex.socket hd screw M4X12-A4-70	2
93,7	410 012	Lock nut	2
93,8	50 018 00	Hex.socket hd screw M4X12-A4-70	2
93,9	410 012	Lock nut	2
93,12	51 713 02	Cable set	1
93,14	51 713 04	Cable set	1
93,17	50 900 62	Single-core cable	1
93,18	50 509 00	Cable set	1

Pos. No	Part. No	Denomination	Qty/Version
			281
93	51 767 19	Starter unit	1
		Contactor unit 50Hz 3-phase 415V - 440V Not CSA approved	
		Contactor unit 50Hz 3-phase 380V - 400V Not CSA approved	
		Contactor unit 50Hz 3-phase 380V - 400V Float switch Not CSA approved	
93,1	51 768 00	Holder	1
93,4	51 511 05	Motor protector SMART	1
93,5	410 812	Contactor	1
93,6	50 018 00	Hex.socket hd screw M4X12-A4-70	2
93,7	410 012	Lock nut	2
93,8	50 018 00	Hex.socket hd screw M4X12-A4-70	2
93,9	410 012	Lock nut	2
93,12	51 713 02	Cable set	1
93,14	51 713 04	Cable set	1
93,16	51 713 06	Cable set	1
93,17	50 900 62	Single-core cable	1
93,18	50 509 00	Cable set	1
93	51 767 20	Starter unit	1
		Contactor unit 50Hz 3-phase 500V - 500V Not CSA approved	
93,1	51 768 00	Holder	1
93,4	51 511 05	Motor protector SMART	1
93,5	410 812	Contactor	1
93,6	50 018 00	Hex.socket hd screw M4X12-A4-70	2
93,7	410 012	Lock nut	2
93,8	50 018 00	Hex.socket hd screw M4X12-A4-70	2
93,9	410 012	Lock nut	2
93,12	51 713 02	Cable set	1
93,14	51 713 04	Cable set	1
93,16	51 713 06	Cable set	1
93,17	50 900 62	Single-core cable	1
93,18	50 509 00	Cable set	1
93	51 767 25	Contactor unit	1
		Contactor unit 50Hz 3-phase 525V - 550V Not CSA approved	
93,1	51 768 00	Holder	1

Pos. No	Part. No	Denomination	Qty/Version
			281
93,4	51 511 05	Motor protector SMART	1
93,5	410 891	Contactor	1
93,6	50 018 00	Hex.socket hd screw M4X12-A4-70	2
93,7	410 012	Lock nut	2
93,8	50 018 00	Hex.socket hd screw M4X12-A4-70	2
93,9	410 012	Lock nut	2
93,12	51 713 02	Cable set	1
93,14	51 713 04	Cable set	1
93,16	51 713 06	Cable set	1
93,17	50 900 62	Single-core cable	1
93,18	50 509 00	Cable set	1
93	51 767 29	Starter unit	1
		Contactor unit 60Hz 3- phase 200V - 208V CSA approved	
		Contactor unit 60Hz 3- phase 220V - 240V CSA approved	
93,1	51 768 00	Holder	1
93,4	51 511 08	Motor protector SMART	1
93,5	410 764	Contactor	1
93,6	50 018 00	Hex.socket hd screw M4X12-A4-70	2
93,7	410 012	Lock nut	2
93,8	50 018 00	Hex.socket hd screw M4X12-A4-70	2
93,9	410 012	Lock nut	2
93,12	51 713 02	Cable set	1
93,17	50 900 62	Single-core cable	1
93,18	50 509 00	Cable set	1
93	51 767 27	Starter unit	1
		Contactor unit 60Hz 3- phase 380V - 400V Not CSA approved	
		Contactor unit 60Hz 3- phase 440V - 480V CSA approved	
		Contactor unit 60Hz 3- phase 380V - 400V CSA approved	
		Contactor unit 60Hz 3- phase 380V - 400V Float switch Not CSA approved	
93,1	51 768 00	Holder	1
93,4	51 511 06	Motor protector SMART	1

Pos. No	Part. No	Denomination	Qty/Version
			281
93,5	410 812	Contacteur	1
93,6	50 018 00	Hex.socket hd screw M4X12-A4-70	2
93,7	410 012	Lock nut	2
93,8	50 018 00	Hex.socket hd screw M4X12-A4-70	2
93,9	410 012	Lock nut	2
93,12	51 713 02	Cable set	1
93,14	51 713 04	Cable set	1
93,16	51 713 06	Cable set	1
93,17	50 900 62	Single-core cable	1
93,18	50 509 00	Cable set	1
93	51 767 28	Starter unit	1
		Contacteur unit 60Hz 3- phase 575V - 600V CSA approved	
93,1	51 768 00	Holder	1
93,4	51 511 06	Motor protector SMART	1
93,5	410 891	Contacteur	1
93,6	50 018 00	Hex.socket hd screw M4X12-A4-70	2
93,7	410 012	Lock nut	2
93,8	50 018 00	Hex.socket hd screw M4X12-A4-70	2
93,9	410 012	Lock nut	2
93,12	51 713 02	Cable set	1
93,14	51 713 04	Cable set	1
93,16	51 713 06	Cable set	1
93,17	50 900 62	Single-core cable	1
93,18	50 509 00	Cable set	1
93	51 767 21	Starter unit	1
		Contacteur unit 50Hz 3- phase 220V - 240V Float switch Not CSA approved	
93,1	51 768 00	Holder	1
93,4	51 511 07	Motor protector SMART	1
93,5	410 764	Contacteur	1
93,6	50 018 00	Hex.socket hd screw M4X12-A4-70	2
93,7	410 012	Lock nut	2
93,8	50 018 00	Hex.socket hd screw M4X12-A4-70	2
93,9	410 012	Lock nut	2
93,12	51 713 02	Cable set	1

Pos. No	Part. No	Denomination	Qty/Version
			281
93,17	50 900 62	Single-core cable	1
93,18	50 509 00	Cable set	1
93	51 767 23	Starter unit	1
		Contactor unit 50Hz 3-phase 415V - 440V Float switch with isolated input Not CSA approved	
		Contactor unit 50Hz 3-phase 380V - 400V Float switch with isolated input Not CSA approved	
93,1	51 768 00	Holder	1
93,4	51 511 05	Motor protector SMART	1
93,5	410 812	Contactor	1
93,6	50 018 00	Hex.socket hd screw M4X12-A4-70	2
93,7	410 012	Lock nut	2
93,8	50 018 00	Hex.socket hd screw M4X12-A4-70	2
93,9	410 012	Lock nut	2
93,14	51 713 04	Cable set	1
93,16	51 713 06	Cable set	1
93,17	50 900 62	Single-core cable	1
93,18	50 509 00	Cable set	1
93,20	51 779 00	Supervision relay	1
93,21	50 457 00	Cable tie	1
93,22	410 034	Closed-end splice 3-6(AWG 12-10) L=18	1
93	51 767 24	Starter unit	1
		Contactor unit 50Hz 3-phase 500V - 500V Float switch with isolated input Not CSA approved	
93,1	51 768 00	Holder	1
93,4	51 511 05	Motor protector SMART	1
93,5	410 812	Contactor	1
93,6	50 018 00	Hex.socket hd screw M4X12-A4-70	2
93,7	410 012	Lock nut	2
93,8	50 018 00	Hex.socket hd screw M4X12-A4-70	2
93,9	410 012	Lock nut	2
93,14	51 713 04	Cable set	1
93,16	51 713 06	Cable set	1
93,17	50 900 62	Single-core cable	1
93,18	50 509 00	Cable set	1

Pos. No	Part. No	Denomination	Qty/Version
			281
93,20	51 779 00	Supervision relay	1
93,21	50 457 00	Cable tie	1
93,22	410 034	Closed-end splice 3-6(AWG 12-10) L=18	1
93	51 767 22	Contactor unit	1
		Contactor unit 50Hz 3-phase 525V - 550V Float switch with isolated input Not CSA approved	
93,1	51 768 00	Holder	1
93,4	51 511 05	Motor protector SMART	1
93,5	410 891	Contactor	1
93,6	50 018 00	Hex.socket hd screw M4X12-A4-70	2
93,7	410 012	Lock nut	2
93,8	50 018 00	Hex.socket hd screw M4X12-A4-70	2
93,9	410 012	Lock nut	2
93,14	51 713 04	Cable set	1
93,16	51 713 06	Cable set	1
93,17	50 900 62	Single-core cable	1
93,18	50 509 00	Cable set	1
93,20	51 779 00	Supervision relay	1
93,21	50 457 00	Cable tie	1
93,22	410 034	Closed-end splice 3-6(AWG 12-10) L=18	1
93	51 767 30	Starter unit	1
		Contactor unit 60Hz 3-phase 440V - 480V Float switch with isolated input CSA approved	
93,1	51 768 00	Holder	1
93,4	51 511 06	Motor protector SMART	1
93,5	410 812	Contactor	1
93,6	50 018 00	Hex.socket hd screw M4X12-A4-70	2
93,7	410 012	Lock nut	2
93,8	50 018 00	Hex.socket hd screw M4X12-A4-70	2
93,9	410 012	Lock nut	2
93,14	51 713 04	Cable set	1
93,16	51 713 06	Cable set	1
93,17	50 900 62	Single-core cable	1
93,18	50 509 00	Cable set	1
93,20	51 779 00	Supervision relay	1

Pos. No	Part. No	Denomination	Qty/Version
			281
93,21	50 457 00	Cable tie	1
93,22	410 034	Closed-end splice 3-6(AWG 12-10) L=18	1
93	51 767 31	Starter unit	1
		Contactor unit 60Hz 3-phase 575V - 600V Float switch with isolated input CSA approved	
93,1	51 768 00	Holder	1
93,4	51 511 06	Motor protector SMART	1
93,5	410 891	Contactor	1
93,6	50 018 00	Hex.socket hd screw M4X12-A4-70	2
93,7	410 012	Lock nut	2
93,8	50 018 00	Hex.socket hd screw M4X12-A4-70	2
93,9	410 012	Lock nut	2
93,14	51 713 04	Cable set	1
93,16	51 713 06	Cable set	1
93,17	50 900 62	Single-core cable	1
93,18	50 509 00	Cable set	1
93,20	51 779 00	Supervision relay	1
93,21	50 457 00	Cable tie	1
93,22	410 034	Closed-end splice 3-6(AWG 12-10) L=18	1
94	50 021 37	Hexagon nut M8-A4-70	4
95	132 289	Plain washer 8-A2-170	4
96	410 890	O-ring 129.3X5.7 NBR	1
97	51 770 00	Cover	1
98	51 726 03	Level regulator unit EU	1
		Contactor unit 50Hz 3-phase 415V - 440V Float switch with isolated input Not CSA approved	
		Contactor unit 50Hz 3-phase 500V - 500V Float switch with isolated input Not CSA approved	
		Contactor unit 50Hz 3-phase 220V - 240V Float switch Not CSA approved	
		Contactor unit 50Hz 3-phase 380V - 400V Float switch with isolated input Not CSA approved	
		Contactor unit 50Hz 3-phase 525V - 550V Float switch with isolated input Not CSA approved	

Pos. No	Part. No	Denomination	Qty/Version
			281
98	51 726 04	Level regulator unit EU	1
		Contactactor unit 50Hz 3-phase 380V - 400V Float switch Not CSA approved	
		Contactactor unit 60Hz 3-phase 380V - 400V Float switch Not CSA approved	
98	51 726 05	Level regulator unit US/CDN	1
		Contactactor unit 60Hz 3-phase 575V - 600V Float switch with isolated input CSA approved	
		Contactactor unit 60Hz 3-phase 440V - 480V Float switch with isolated input CSA approved	
99	410 077	Cable clamp STAINLESS STEEL, CR	1
101	50 127 04	Plain washer (10)-22 MM	1
102	410 727	Seal sleeve (10)-12 MM	1
		SUBCAB 4G1,5 10,50 - 11,50mm Max 750V	
102	410 729	Seal sleeve (14)-16 MM	1
		SUBCAB 4G1,5+2x1,5 16 - 17mm Max 750V	
		SUBCAB 14AWG/4 14,20 - 15,20mm Max 600V	
102	410 728	Seal sleeve (12)-14 MM	1
		SUBCAB 4G2,5 12,50 - 13,50mm Max 750V	
		Screened 3x2,5 13,50 - 14,90mm Max 1000V	
102	410 730	Seal sleeve (16)-18 MM	1
		SUBCAB 4G2,5+2x1,5 17 - 18mm Max 750V	
		SUBCAB 12AWG/4 17 - 18mm Max 600V	
102	410 731	Seal sleeve (18)-20 MM	1
		SUBCAB 14AWG/7 18 - 20mm Max 600V	
		SUBCAB S3x2,5+3x2,5/3+S(4x0,5) 18 - 20mm Max 1000V	
102	410 732	Seal sleeve (20)-22 MM	1
		SUBCAB 10AWG/3-2-1-GC 20,30 - 22,30mm Max 600V	
		SUBCAB 12AWG/7 20 Max 600V	
102	410 733	Seal sleeve (22)-24 MM	1
		SUBCAB 10AWG/3-2-1-GC 20,30 - 22,30mm Max 600V	
103	50 926 00	Cable clip (10)-12 MM	1
		SUBCAB 4G1,5 10,50 - 11,50mm Max 750V	
103	50 926 02	Cable clip (14)-16 MM	1
		SUBCAB 4G1,5+2x1,5 16 - 17mm Max 750V	
		SUBCAB 14AWG/4 14,20 - 15,20mm Max 600V	

Pos. No	Part. No	Denomination	Qty/Version	
			281	
103	50 926 01	Cable clip (12)-14 MM	SUBCAB 4G2,5 12,50 - 13,50mm Max 750V Screened 3x2,5 13,50 - 14,90mm Max 1000V	1
103	50 926 03	Cable clip (16)-18 MM	SUBCAB 4G2,5+2x1,5 17 - 18mm Max 750V SUBCAB 12AWG/4 17 - 18mm Max 600V	1
103	50 926 04	Cable clip (18)-20 MM	SUBCAB 14AWG/7 18 - 20mm Max 600V SUBCAB S3x2,5+3x2,5/3+S(4x0,5) 18 - 20mm Max 1000V	1
103	50 926 05	Cable clip (20)-22 MM	SUBCAB 10AWG/3-2-1-GC 20,30 - 22,30mm Max 600V SUBCAB 12AWG/7 20 Max 600V	1
104	50 932 00	Entrance flange		1
105	410 534	Hex.socket hd screw M6X25-A2-70		2
106	410 013	Plain washer 6-A4-170		2
107	410 889	Hex.socket hd screw M6X16-A2-70		1
107	410 889	Hex.socket hd screw M6X16-A2-70		2
108	51 714 05	Motor cable unit	SUBCAB 4G1,5 10,50 - 11,50mm L= 20m Max 750V	1
108	51 714 10	Motor cable unit	SUBCAB 4G1,5+2x1,5 16 - 17mm L= 20m Max 750V	1
108	51 714 06	Motor cable unit	SUBCAB 4G2,5 12,50 - 13,50mm L= 20m Max 750V	1
108	51 714 11	Motor cable unit	SUBCAB 4G2,5+2x1,5 17 - 18mm L= 20m Max 750V	1
108	51 714 07	Motor cable unit	SUBCAB 14AWG/4 14,20 - 15,20mm L= 16m Max 600V	1
108	51 714 15	Motor cable unit	SUBCAB 14AWG/7 18 - 20mm L= 16m Max 600V	1
108	51 714 08	Motor cable unit	SUBCAB 12AWG/4 17 - 18mm L= 16m Max 600V	1
108	51 714 16	Motor cable unit	SUBCAB 12AWG/7 20 L= 16m Max 600V	1
108	51 714 17	Motor cable unit	SUBCAB 10AWG/3-2-1-GC 20,30 - 22,30mm L= 16m Max 600V	1

Pos. No	Part. No	Denomination	Qty/Version	
			281	
108	51 714 21	Motor cable unit	Screened 3x2,5 13,50 - 14,90mm L= 20m Max 1000V	1
108	51 714 19	Motor cable unit	SUBCAB S3x2,5+3x2,5/3+S(4x0,5) 18 - 20mm L= 20m Max 1000V	1
120	50 100 00	Plug contact	3-phase 50 Hz 380V - 415V Current range: 0 - 16A Plug combined with short cable: No cable Supply connection: CEE 5-PLUG 16A Starter (Phase shifter) 3-phase 50/60 Hz 380V - 415V Current range: 0 - 16A Plug combined with short cable: SUBCAB 4G2,5 Supply connection: CEE 5-PLUG 16A	1
120	50 100 01	Plug contact	3-phase 50 Hz 380V - 415V Current range: 0 - 32A Plug combined with short cable: No cable Supply connection: CEE 5-PLUG 32A	1
120	410 684	Plug contact	3-phase 50 Hz 380V - 415V Current range: 0 - 16A Plug combined with short cable: No cable Supply connection: CEE 4-PLUG 16A	1
121	51 735 00	Sticker		1
122	51 735 01	Sticker		1
122	51 735 01	Sticker		2
123	131 039	Motor cable subcab	Starter (Phase shifter) 3-phase 50/60 Hz 220V - 575V Current range: 0 - 16A Plug combined with short cable: SUBCAB 4G2,5 Starter (Phase shifter) 3-phase 50/60 Hz 380V - 415V Current range: 0 - 16A Plug combined with short cable: SUBCAB 4G2,5 Supply connection: CEE 5-PLUG 16A	*
123	410 065	Motor cable subcab	Starter (Phase shifter) 3-phase 50/60 Hz 220V - 575V Current range: 0 - 16A Plug combined with short cable: SUBCAB 14AWG/4	*

Pos. No	Part. No	Denomination	Qty/Version
			281
123	133 139	Motor cable subcab	Starter (Phase shifter) 3-phase 50/60 Hz 220V - 575V Current range: 0 - 22A Plug combined with short cable: SUBCAB 4G4 *
123	410 067	Motor cable subcab	Starter (Phase shifter) 3-phase 50/60 Hz 220V - 575V Current range: 0 - 22A Plug combined with short cable: SUBCAB 12AWG/4 *
124	50 102 00	Phase shifter	Current range: 0 - 16A 1
124	50 102 01	Phase shifter	Current range: 0 - 22A 1
125	51 735 01	Sticker	2
130	131 787	Discharge connection	DN 75 Hose 3" aluminium 1
130	132 048	Discharge connection	DN 75 Thread : ISO G3A Outer aluminium 1 DN 75 Thread : ISO G3A Outer Quick coupling: Storz aluminium
130	132 049	Discharge connection	DN 75 Thread : NPSM 3-8 Outer aluminium 1
130	131 622	Discharge connection	DN 100 Hose 4" aluminium 1
130	131 623	Discharge connection	DN 100 Thread : ISO G4A Outer aluminium 1 DN 100 Thread : ISO G4A Outer Quick coupling: Storz aluminium DN 100 Thread : ISO G4A Outer Quick coupling: Storz diam=115 mm aluminium
130	131 624	Discharge connection	DN 100 Thread : NPSM 4-8 Outer aluminium 1
130	50 198 01	Discharge connection	DN 75 Hose 3" Grey cast iron 1
130	50 198 02	Discharge connection	DN 75 Thread : ISO G3A Outer Grey cast iron 1
130	50 198 00	Discharge connection	DN 75 Thread : NPT 3-8 Outer Grey cast iron 1
130	50 199 01	Discharge connection	DN 100 Hose 4" Grey cast iron 1
130	50 199 02	Discharge connection	DN 100 Thread : ISO G4A Outer Grey cast iron 1
130	50 199 00	Discharge connection	DN 100 Thread : NPT 4-8 Outer Grey cast iron 1
131	50 727 00	Connection flange	1

Pos. No	Part. No	Denomination	Qty/Version
			281
132	410 028	Coupling part Discharge Connection DN 75 Thread : ISO G3A Outer Quick coupling: Storz aluminium	1
132	410 030	Coupling part Discharge Connection DN 100 Thread : ISO G4A Outer Quick coupling: Storz aluminium	1
132	410 029	Coupling part Discharge Connection DN 100 Thread : ISO G4A Outer Quick coupling: Storz diam=115 mm aluminium	1
133	410 543	Hexagon head screw M16X45-A2-70	2
134	132 258	Plain washer 16-A2-A-170	2
800	51 777 00	O-ring kit NBR	1
801	51 096 00	Anode unit	1
900	51 786 00	Basic repair kit NBR PLUGIN 20MM RSIC/ RSIC;WCCR/A1203	1
900,1	410 031	Ball bearing 20X52X22.2 MM	1
900,1	410 082	Retaining ring	1
900,2	50 287 04	Ball bearing 20X52X15 MM	1
900,3	410 041	Pressure equalizer L=510 MM	1
900,4	51 760 51	Mechanical seal	1
900,5	51 777 00	O-ring kit	1
900,6	51 829 00	Sticker	1



Grindex
Gesällvägen 33
174 07 Sundbyberg
Sweden
Tel: +46-8-606 66 00
Fax: +46-8-745 53 28
www.grindex.com

Visit our Web site for the latest version of this document
and more information

The original instruction is in English. All non-English
instructions are translations of the original instruction.

© 2012 Grindex