

## Parts List

8109.282 Salvador 1~, 3~





---

# Table of Contents

<b>Introduction</b> .....	<b>2</b>
Specially approved products.....	2
<b>Product Description</b> .....	<b>3</b>
The data plate.....	3
<b>Parts</b> .....	<b>4</b>
Exploded view.....	4
List of parts.....	5

# Introduction

## **Purpose of this manual**

The purpose of this manual is to provide necessary information on spare parts and accessories order.

## **Disclaimer**

Always use genuine Grindex parts. The use of other spare parts or accessories can invalidate any claims for warranty or compensation. Grindex does not take any responsibility for damages that are caused by the use of non-original parts. For more information, contact your local sales and service representative.

## **Data for ordering spare parts**

The following information is needed for spare part orders:

- Serial number of the product
- Part number
- Quantity of bulk material, see \* in tables

## **Specially approved products**

### **Qualification of personnel**

Only Grindex or Grindex-authorized service personnel may undertake repair work on Ex-approved products.

### **Dimensional accuracy inspection**

Spare parts marked with (Ex) after the part number are subject to dimensional accuracy inspection.

# Product Description

## Products included

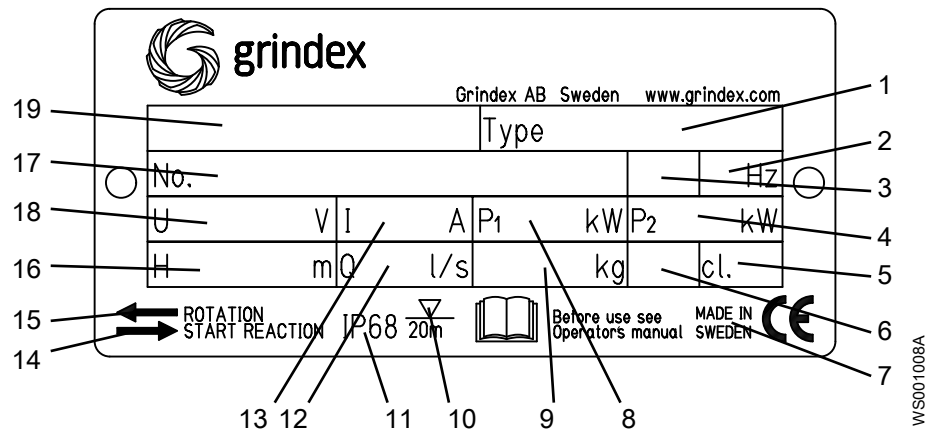
Pump model	Approvals
Salvador 8109.282	Standard

## The data plate

### Introduction

The data plate is a metal label located on the main body of the pump. The data plate lists key product specifications.

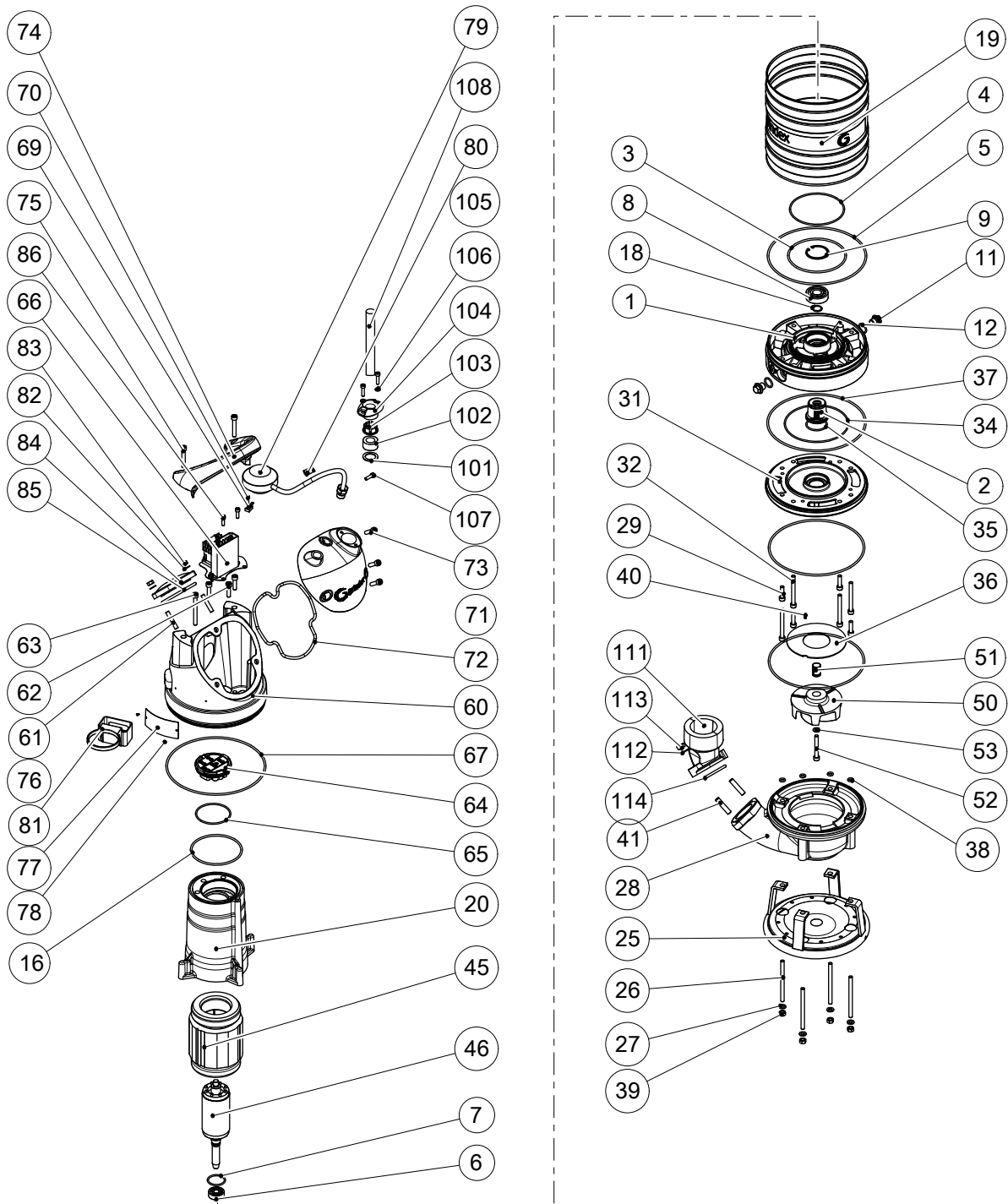
### The data plate

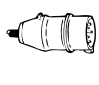
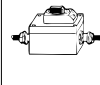




1. Pump type number
2. Frequency
3. Phases, type of current
4. Rated shaft power
5. Thermal class
6. Locked rotor code-letter
7. Country of origin
8. Maximum power consumption
9. Product weight
10. Maximum submersion depth
11. Degree of protection
12. Maximum capacity
13. Rated current
14. Direction of the start reaction
15. Direction of the impeller rotation
16. Maximum head
17. Serial number
18. Rated voltage
19. Pump model

# Parts

## Exploded view



<p><b>PLUG CONTACT</b></p> 	<p><b>PHASE SHIFTER</b></p> 	<p><b>O-RING KIT</b></p> 	<p><b>BASIC REPAIR KIT</b></p> 
90	92	800	900

20128A\_8109\_282\_expl\_view

## List of parts

Table 1: 8109

Pos. No	Part. No	Denomination	Qty/Version
			282
1	51 707 01	Intermediate piece	1
2	51 728 50	Mechanical seal	1
3	410 020	O-ring 127.0X4.0 NBR	1
4	50 037 01	O-ring 119.5X3 NBR	1
5	410 161	O-ring 215.0X4.0 NBR	1
6	50 287 03	Ball bearing 12X37X12 MM	1
7	50 037 63	O-ring 36.2X3.0 FPM	1
8	50 287 04	Ball bearing 20X52X15 MM	1
9	410 834	Retaining ring	1
11	133 063	Inspection screw	2
12	133 064	O-ring 19.2X3 NBR	2
13	133 064	O-ring 19.2X3 NBR	4
14	410 053	Oil ISO VG 32	*
16	50 772 84	O-ring 114X4.0 NBR	1
17	50 992 00	Sticker R1 145-22 AHT +R1 205 AP	1
18	50 278 02	Retaining ring SGA 20	1
19	51 720 00	Outer casing	1
20	51 681 00	Stator housing	1
25	132 740	Stand	1
26	50 021 26	Stud M8X105-A2-70	4
27	50 021 38	Plain washer 8-A4-170	4
28	50 065 01	Pump housing	1
29	140 050	Hex.socket hd screw M8X30-A2-70	4
31	51 710 00	Seal housing cover	1
32	410 830	Hex.socket hd screw M8X80-A2-70	4
34	410 833	O-ring 139.5X3 NBR	1
35	50 037 61	O-ring 44.2X3 NBR	1
36	51 091 00	Guide plate	1
37	410 161	O-ring 215.0X4.0 NBR	2
38	50 037 18	O-ring 8X3 NBR	4
39	50 021 37	Hexagon nut M8-A4-70	4
40	410 167	Parallel pin CP- H8-5X12-2343	1
41	410 169	Stud 10X35-A2-70	2

Pos. No	Part. No	Denomination	Qty/Version	
			282	
45	50 912 00	Stator 13-10-2b	Stator 3-phase 50Hz 220V-240V D Max ambient temp=40 DC	1
45	50 912 03	Stator 13-10-2b	Stator 3-phase 60Hz 220V-240V D Max ambient temp=40 DC	1
45	50 912 02	Stator 13-10-2b	Stator 3-phase 60Hz 220V-240V Y// Max ambient temp=40 DC	1
45	50 912 16	Stator 13-10-2b	Stator 3-phase 60Hz 220V-230V D// Max ambient temp=40 DC	1
45	50 912 18	Stator 13-10-2b	Stator 3-phase 50Hz 380V-400V Y Max ambient temp=40 DC .   Stator 3- phase 60Hz 440V-480V Y Max ambient temp=40 DC	1
45	50 912 04	Stator 13-10-2b	Stator 3-phase 50Hz 415V-440V Y Max ambient temp=40 DC	1
45	50 912 17	Stator 13-10-2b	Stator 3-phase 50Hz 500V Y Max ambient temp=40 DC .   Stator 3-phase 60Hz 575V-600V Y Max ambient temp=40 DC	1
45	50 913 00	Stator 13-10-2b	Stator 1-phase 50Hz 220V-240V Max ambient temp=40 DC	1
45	50 913 02	Stator 13-10-2b	Stator 1-phase 60Hz 220V-240V Max ambient temp=40 DC	1
46	51 724 00	Shaft unit		1
50	51 092 10	Impeller	N 50Hz 1-phase Max ambient temp=40 DC	1
50	51 700 00	Impeller	N 50Hz 3-phase Max ambient temp=40 DC	1
50	51 700 02	Impeller	N 60Hz 1-phase Max ambient temp=40 DC	1
50	51 700 01	Impeller	N 60Hz 3-phase Max ambient temp=40 DC	1
51	51 721 00	Sleeve unit		1
52	410 006	Hexagon head screw M8X60-A4-80		1
53	50 021 38	Plain washer 8-A4-170		1
60	51 783 00	Cover		1
60,1	50 869 00	Air release valve		1
61	410 689	Stud M8X45-A2-70		2



Pos. No	Part. No	Denomination	Qty/Version
			282
62	140 050	Hex.socket hd screw M8X30-A2-70	3
63	410 830	Hex.socket hd screw M8X80-A2-70	1
64	51 711 01	Terminal plate unit	1-phase
64	51 711 00	Terminal plate unit	3-phase
65	50 037 58	O-ring 74.5X3.0 NBR	1
66	51 712 33	Starter unit	Contactor unit 50Hz 220V - 240V Not CSA approved
66,1	51 716 00	Holder	1
66,4	51 511 07	Motor protector SMART	1
66,5	410 111	Contactor	1
66,6	410 008	Hex.socket hd screw M4X16-A2-70	2
66,7	410 012	Lock nut	2
66,8	410 008	Hex.socket hd screw M4X16-A2-70	2
66,9	410 012	Lock nut	2
66,12	51 713 02	Cable set	1
66,14	51 713 04	Cable set	1
66,16	51 713 06	Cable set	1
66,17	50 900 62	Single-core cable	1
66,18	50 509 00	Cable set	1
66	51 712 34	Starter unit	Contactor unit 50Hz 380V - 400V Not CSA approved
66,1	51 716 00	Holder	1
66,4	51 511 05	Motor protector SMART	1
66,5	410 109	Contactor	1
66,6	410 008	Hex.socket hd screw M4X16-A2-70	2
66,7	410 012	Lock nut	2
66,8	410 008	Hex.socket hd screw M4X16-A2-70	2
66,9	410 012	Lock nut	2
66,12	51 713 02	Cable set	1
66,14	51 713 04	Cable set	1
66,16	51 713 06	Cable set	1
66,17	50 900 62	Single-core cable	1
66,18	50 509 00	Cable set	1
66	51 712 35	Starter unit	Contactor unit 50Hz 415V - 440V Not CSA approved
66,1	51 716 00	Holder	1

Pos. No	Part. No	Denomination	Qty/Version
			282
66,4	51 511 05	Motor protector SMART	1
66,5	410 163	Contactora	1
66,6	410 008	Hex.socket hd screw M4X16-A2-70	2
66,7	410 012	Lock nut	2
66,8	410 008	Hex.socket hd screw M4X16-A2-70	2
66,9	410 012	Lock nut	2
66,12	51 713 02	Cable set	1
66,14	51 713 04	Cable set	1
66,16	51 713 06	Cable set	1
66,17	50 900 62	Single-core cable	1
66,18	50 509 00	Cable set	1
66	51 712 36	Starter unit	1
		Contactor unit 50Hz 500V Not CSA approved	
66,1	51 716 00	Holder	1
66,4	51 511 05	Motor protector SMART	1
66,5	410 110	Contactora	1
66,6	410 008	Hex.socket hd screw M4X16-A2-70	2
66,7	410 012	Lock nut	2
66,8	410 008	Hex.socket hd screw M4X16-A2-70	2
66,9	410 012	Lock nut	2
66,12	51 713 02	Cable set	1
66,14	51 713 04	Cable set	1
66,16	51 713 06	Cable set	1
66,17	50 900 62	Single-core cable	1
66,18	50 509 00	Cable set	1
66	51 712 36	Starter unit	1
		Contactor unit 50Hz - 550V Not CSA approved	
66,1	51 716 00	Holder	1
66,4	51 511 05	Motor protector SMART	1
66,5	410 110	Contactora	1
66,6	410 008	Hex.socket hd screw M4X16-A2-70	2
66,7	410 012	Lock nut	2
66,8	410 008	Hex.socket hd screw M4X16-A2-70	2
66,9	410 012	Lock nut	2
66,12	51 713 02	Cable set	1

Pos. No	Part. No	Denomination	Qty/Version
			282
66,14	51 713 04	Cable set	1
66,16	51 713 06	Cable set	1
66,17	50 900 62	Single-core cable	1
66,18	50 509 00	Cable set	1
66	51 712 43	Starter unit Contactor unit 60Hz 220V - 240V CSA approved	1
66,1	51 716 00	Holder	1
66,4	51 511 08	Motor protector SMART	1
66,5	410 111	Contactor	1
66,6	410 008	Hex.socket hd screw M4X16-A2-70	2
66,7	410 012	Lock nut	2
66,8	410 008	Hex.socket hd screw M4X16-A2-70	2
66,9	410 012	Lock nut	2
66,12	51 713 02	Cable set	1
66,14	51 713 04	Cable set	1
66,16	51 713 06	Cable set	1
66,17	50 900 62	Single-core cable	1
66,18	50 509 00	Cable set	1
66	51 712 44	Starter unit Contactor unit 60Hz 380V - 400V CSA approved	1
66,1	51 716 00	Holder	1
66,4	51 511 06	Motor protector SMART	1
66,5	410 109	Contactor	1
66,6	410 008	Hex.socket hd screw M4X16-A2-70	2
66,7	410 012	Lock nut	2
66,8	410 008	Hex.socket hd screw M4X16-A2-70	2
66,9	410 012	Lock nut	2
66,12	51 713 02	Cable set	1
66,14	51 713 04	Cable set	1
66,16	51 713 06	Cable set	1
66,17	50 900 62	Single-core cable	1
66,18	50 509 00	Cable set	1
66	51 712 45	Starter unit Contactor unit 60Hz 440V - 480V CSA approved	1
66,1	51 716 00	Holder	1
66,4	51 511 06	Motor protector SMART	1
66,5	410 163	Contactor	1

Pos. No	Part. No	Denomination	Qty/Version
			282
66,6	410 008	Hex.socket hd screw M4X16-A2-70	2
66,7	410 012	Lock nut	2
66,8	410 008	Hex.socket hd screw M4X16-A2-70	2
66,9	410 012	Lock nut	2
66,12	51 713 02	Cable set	1
66,14	51 713 04	Cable set	1
66,16	51 713 06	Cable set	1
66,17	50 900 62	Single-core cable	1
66,18	50 509 00	Cable set	1
66	51 712 47	Starter unit	1
		Contactor unit 60Hz 575V - 600V CSA approved	
66,1	51 716 00	Holder	1
66,4	51 511 06	Motor protector SMART	1
66,5	410 902	Contactor	1
66,6	410 008	Hex.socket hd screw M4X16-A2-70	2
66,7	410 012	Lock nut	2
66,8	410 008	Hex.socket hd screw M4X16-A2-70	2
66,9	410 012	Lock nut	2
66,12	51 713 02	Cable set	1
66,14	51 713 04	Cable set	1
66,16	51 713 06	Cable set	1
66,17	50 900 62	Single-core cable	1
66,18	50 509 00	Cable set	1
66	51 712 33	Starter unit	1
		Contactor unit 50Hz 220V - 240V Float switch Not CSA approved	
66,1	51 716 00	Holder	1
66,4	51 511 07	Motor protector SMART	1
66,5	410 111	Contactor	1
66,6	410 008	Hex.socket hd screw M4X16-A2-70	2
66,7	410 012	Lock nut	2
66,8	410 008	Hex.socket hd screw M4X16-A2-70	2
66,9	410 012	Lock nut	2
66,12	51 713 02	Cable set	1
66,14	51 713 04	Cable set	1
66,16	51 713 06	Cable set	1

Pos. No	Part. No	Denomination	Qty/Version
			282
66,17	50 900 62	Single-core cable	1
66,18	50 509 00	Cable set	1
66	51 712 34	Starter unit Contactor unit 50Hz 380V - 400V Float switch Not CSA approved	1
66,1	51 716 00	Holder	1
66,4	51 511 05	Motor protector SMART	1
66,5	410 109	Contactor	1
66,6	410 008	Hex.socket hd screw M4X16-A2-70	2
66,7	410 012	Lock nut	2
66,8	410 008	Hex.socket hd screw M4X16-A2-70	2
66,9	410 012	Lock nut	2
66,12	51 713 02	Cable set	1
66,14	51 713 04	Cable set	1
66,16	51 713 06	Cable set	1
66,17	50 900 62	Single-core cable	1
66,18	50 509 00	Cable set	1
66	51 712 43	Starter unit Contactor unit 60Hz 220V - 240V Float switch CSA approved	1
66,1	51 716 00	Holder	1
66,4	51 511 08	Motor protector SMART	1
66,5	410 111	Contactor	1
66,6	410 008	Hex.socket hd screw M4X16-A2-70	2
66,7	410 012	Lock nut	2
66,8	410 008	Hex.socket hd screw M4X16-A2-70	2
66,9	410 012	Lock nut	2
66,12	51 713 02	Cable set	1
66,14	51 713 04	Cable set	1
66,16	51 713 06	Cable set	1
66,17	50 900 62	Single-core cable	1
66,18	50 509 00	Cable set	1
66	51 712 38	Starter unit Contactor unit 50Hz 380V - 400V Float switch with isolated input	1
66,1	51 716 00	Holder	1
66,4	51 511 05	Motor protector SMART	1
66,5	410 109	Contactor	1

Pos. No	Part. No	Denomination	Qty/Version
			282
66,6	410 008	Hex.socket hd screw M4X16-A2-70	2
66,7	410 012	Lock nut	2
66,8	410 008	Hex.socket hd screw M4X16-A2-70	2
66,9	410 012	Lock nut	2
66,14	51 713 04	Cable set	1
66,16	51 713 06	Cable set	1
66,17	50 900 62	Single-core cable	1
66,18	50 509 00	Cable set	1
66,20	51 779 00	Supervision relay	1
66,21	50 457 00	Cable tie	1
66	51 712 39	Starter unit	1
		Contactor unit 50Hz 415V - 440V Float switch with isolated input Not CSA approved	
66,1	51 716 00	Holder	1
66,4	51 511 05	Motor protector SMART	1
66,5	410 163	Contactor	1
66,6	410 008	Hex.socket hd screw M4X16-A2-70	2
66,7	410 012	Lock nut	2
66,8	410 008	Hex.socket hd screw M4X16-A2-70	2
66,9	410 012	Lock nut	2
66,14	51 713 04	Cable set	1
66,16	51 713 06	Cable set	1
66,17	50 900 62	Single-core cable	1
66,18	50 509 00	Cable set	1
66,20	51 779 00	Supervision relay	1
66,21	50 457 00	Cable tie	1
66	51 712 40	Starter unit	1
		Contactor unit 50Hz 500V Float switch with isolated input	
66,1	51 716 00	Holder	1
66,4	51 511 05	Motor protector SMART	1
66,5	410 902	Contactor	1
66,6	410 008	Hex.socket hd screw M4X16-A2-70	2
66,7	410 012	Lock nut	2
66,8	410 008	Hex.socket hd screw M4X16-A2-70	2

Pos. No	Part. No	Denomination	Qty/Version
			282
66,9	410 012	Lock nut	2
66,14	51 713 04	Cable set	1
66,16	51 713 06	Cable set	1
66,17	50 900 62	Single-core cable	1
66,18	50 509 00	Cable set	1
66,20	51 779 00	Supervision relay	1
66,21	50 457 00	Cable tie	1
66	51 712 40	Starter unit	1
		Contactor unit 50Hz 525V - 550V Float switch with isolated input	
66,1	51 716 00	Holder	1
66,4	51 511 05	Motor protector SMART	1
66,5	410 902	Contactor	1
66,6	410 008	Hex.socket hd screw M4X16-A2-70	2
66,7	410 012	Lock nut	2
66,8	410 008	Hex.socket hd screw M4X16-A2-70	2
66,9	410 012	Lock nut	2
66,14	51 713 04	Cable set	1
66,16	51 713 06	Cable set	1
66,17	50 900 62	Single-core cable	1
66,18	50 509 00	Cable set	1
66,20	51 779 00	Supervision relay	1
66,21	50 457 00	Cable tie	1
66	51 712 49	Starter unit	1
		Contactor unit 60Hz 440V - 480V Float switch with isolated input CSA approved	
66,1	51 716 00	Holder	1
66,4	51 511 06	Motor protector SMART	1
66,5	410 163	Contactor	1
66,6	410 008	Hex.socket hd screw M4X16-A2-70	2
66,7	410 012	Lock nut	2
66,8	410 008	Hex.socket hd screw M4X16-A2-70	2
66,9	410 012	Lock nut	2
66,14	51 713 04	Cable set	1
66,16	51 713 06	Cable set	1
66,17	50 900 62	Single-core cable	1
66,18	50 509 00	Cable set	1

Pos. No	Part. No	Denomination	Qty/Version
			282
66,20	51 779 00	Supervision relay	1
66,21	50 457 00	Cable tie	1
66	51 712 50	Starter unit                      Contactor unit	1
66,1	51 716 00	Holder	1
66,4	51 511 06	Motor protector SMART	1
66,5	410 902	Contactor	1
66,6	410 008	Hex.socket hd screw M4X16-A2-70	2
66,7	410 012	Lock nut	2
66,8	410 008	Hex.socket hd screw M4X16-A2-70	2
66,9	410 012	Lock nut	2
66,14	51 713 04	Cable set	1
66,16	51 713 06	Cable set	1
66,17	50 900 62	Single-core cable	1
66,18	50 509 00	Cable set	1
66,20	51 779 00	Supervision relay	1
66,21	50 457 00	Cable tie	1
66	51 712 02	Starter unit                      Capacitor unit 50Hz 220V - 240V 1-phase Not CSA approved	1
66,1	51 716 00	Holder	1
66,2	410 089	Capacitor 100MF 360/450 V	1
66,3	410 376	Capacitor 20MF 400V	1
66,4	50 906 02	Start relay SNT	1
66,6	410 008	Hex.socket hd screw M4X16-A2-70	2
66,7	410 012	Lock nut	2
66,10	51 004 00	Cable set	1
66,11	51 713 01	Cable set	1
66,12	51 713 02	Cable set	1
66,19	50 021 36	Lock nut M8-A4-70	2
66	51 712 02	Starter unit                      Capacitor unit 60Hz 220V - 240V 1-phase CSA approved	1
66,1	51 716 00	Holder	1
66,2	410 089	Capacitor 100MF 360/450 V	1
66,3	410 376	Capacitor 20MF 400V	1
66,4	50 906 02	Start relay SNT	1
66,6	410 008	Hex.socket hd screw M4X16-A2-70	2



Pos. No	Part. No	Denomination	Qty/Version
			282
66,7	410 012	Lock nut	2
66,10	51 004 00	Cable set	1
66,11	51 713 01	Cable set	1
66,12	51 713 02	Cable set	1
66,19	50 021 36	Lock nut M8-A4-70	2
66	51 712 02	Starter unit Capacitor unit 50Hz 220V - 240V 1-phase Float switch Not CSA approved	1
66,1	51 716 00	Holder	1
66,2	410 089	Capacitor 100MF 360/450 V	1
66,3	410 376	Capacitor 20MF 400V	1
66,4	50 906 02	Start relay SNT	1
66,6	410 008	Hex.socket hd screw M4X16-A2-70	2
66,7	410 012	Lock nut	2
66,10	51 004 00	Cable set	1
66,11	51 713 01	Cable set	1
66,12	51 713 02	Cable set	1
66,19	50 021 36	Lock nut M8-A4-70	2
66	51 712 02	Starter unit Capacitor unit 60Hz 220V - 240V 1-phase Float switch CSA approved	1
66,1	51 716 00	Holder	1
66,2	410 089	Capacitor 100MF 360/450 V	1
66,3	410 376	Capacitor 20MF 400V	1
66,4	50 906 02	Start relay SNT	1
66,6	410 008	Hex.socket hd screw M4X16-A2-70	2
66,7	410 012	Lock nut	2
66,10	51 004 00	Cable set	1
66,11	51 713 01	Cable set	1
66,12	51 713 02	Cable set	1
66,19	50 021 36	Lock nut M8-A4-70	2
67	410 161	O-ring 215.0X4.0 NBR	1
68	51 671 00	Connection plate	1
69	51 725 00	Thermal detector unit	1
70	410 008	Hex.socket hd screw M4X16-A2-70	1
71	51 687 00	Cover	1
71	51 687 01	Cover For float switch	1
72	51 723 00	Gasket	1

Pos. No	Part. No	Denomination	Qty/Version
			282
73	140 050	Hex.socket hd screw M8X30-A2-70	3
74	51 691 00	Handle	1
75	50 771 32	Hex.socket hd screw M8X50-A2-70	2
77	50 888 00	Data plate	Use 50 907 00 (EU), 50 907 01 (US) as spare part 1
78	410 000	Drive screw 4X5-A2/A4	Terminal board Max 750V 1-phase CSA approved 4
78	410 000	Drive screw 4X5-A2/A4	Contacteur unit 50Hz 220V - 240V Float switch Not CSA approved 2
78	410 000	Drive screw 4X5-A2/A4	Contacteur unit 60Hz 220V - 240V Float switch CSA approved 2
79	51 726 03	Level regulator unit EU	Contacteur unit 50Hz 220V - 240V Float switch Not CSA approved 1
79,1	410 840	Contact pin	1
79,2	410 839	Socket contact	1
79,3	410 873	Cable lug UL/CSA 0.5-1.65 MM2	1
79,4	410 842	Insulating sleeve	1
79,5	410 843	Insulating sleeve 1,5 - 2,5 MM2	1
79,6	410 774	Level switch	1
79,7	410 370	Plain washer	1
79,8	51 278 00	Bending protection	1
79,9	410 367	Gland screw	1
79	51 724 05	Level regulator unit US/CDN	Contacteur unit 60Hz 220V - 240V Float switch CSA approved 1
79,1	410 840	Contact pin	1
79,2	410 839	Socket contact	1
79,3	410 873	Cable lug UL/CSA 0.5-1.65 MM2	1
79,4	410 842	Insulating sleeve	1
79,5	410 843	Insulating sleeve 1,5 - 2,5 MM2	1
79,6	410 868	Level switch	1
79,7	410 370	Plain washer	1
79,8	51 278 00	Bending protection	1
79,9	410 367	Gland screw	1

Pos. No	Part. No	Denomination	Qty/Version
			282
79	51 726 04	Level regulator unit EU      Contactor unit 50Hz 380V - 400V Float switch Not CSA approved	1
79,1	410 840	Contact pin	1
79,2	410 839	Socket contact	1
79,3	410 873	Cable lug UL/CSA 0.5-1.65 MM2	1
79,4	410 842	Insulating sleeve	1
79,5	410 843	Insulating sleeve 1,5 - 2,5 MM2	1
79,6	410 370	Plain washer	1
79,7	50 176 00	Level switch	1
79,8	51 278 00	Bending protection	1
79,9	410 367	Gland screw	1
79	51 726 04	Level regulator unit EU      Contactor unit 50Hz 380V - 400V Float switch with isolated input	1
79,1	410 840	Contact pin	1
79,2	410 839	Socket contact	1
79,3	410 873	Cable lug UL/CSA 0.5-1.65 MM2	1
79,4	410 842	Insulating sleeve	1
79,5	410 843	Insulating sleeve 1,5 - 2,5 MM2	1
79,6	410 370	Plain washer	1
79,7	50 176 00	Level switch	1
79,8	51 278 00	Bending protection	1
79,9	410 367	Gland screw	1
79	51 726 04	Level regulator unit EU      Contactor unit 50Hz 415V - 440V Float switch with isolated input Not CSA approved	1
79,1	410 840	Contact pin	1
79,2	410 839	Socket contact	1
79,3	410 873	Cable lug UL/CSA 0.5-1.65 MM2	1
79,4	410 842	Insulating sleeve	1
79,5	410 843	Insulating sleeve 1,5 - 2,5 MM2	1
79,6	410 370	Plain washer	1
79,7	50 176 00	Level switch	1
79,8	51 278 00	Bending protection	1
79,9	410 367	Gland screw	1

Pos. No	Part. No	Denomination	Qty/Version
			282
79	51 726 04	Level regulator unit EU	1
		Contactor unit 50Hz 500V Float switch with isolated input	
79,1	410 840	Contact pin	1
79,2	410 839	Socket contact	1
79,3	410 873	Cable lug UL/CSA 0.5-1.65 MM2	1
79,4	410 842	Insulating sleeve	1
79,5	410 843	Insulating sleeve 1,5 - 2,5 MM2	1
79,6	410 370	Plain washer	1
79,7	50 176 00	Level switch	1
79,8	51 278 00	Bending protection	1
79,9	410 367	Gland screw	1
79	51 726 04	Level regulator unit EU	1
		Contactor unit 50Hz 525V - 550V Float switch with isolated input	
79,1	410 840	Contact pin	1
79,2	410 839	Socket contact	1
79,3	410 873	Cable lug UL/CSA 0.5-1.65 MM2	1
79,4	410 842	Insulating sleeve	1
79,5	410 843	Insulating sleeve 1,5 - 2,5 MM2	1
79,6	410 370	Plain washer	1
79,7	50 176 00	Level switch	1
79,8	51 278 00	Bending protection	1
79,9	410 367	Gland screw	1
79	51 724 05	Level regulator unit US/CDN	1
		Contactor unit 60Hz 440V - 480V Float switch with isolated input CSA approved	
79,1	410 840	Contact pin	1
79,2	410 839	Socket contact	1
79,3	410 873	Cable lug UL/CSA 0.5-1.65 MM2	1
79,4	410 842	Insulating sleeve	1
79,5	410 843	Insulating sleeve 1,5 - 2,5 MM2	1
79,6	410 868	Level switch	1
79,7	410 370	Plain washer	1
79,8	51 278 00	Bending protection	1
79,9	410 367	Gland screw	1

Pos. No	Part. No	Denomination	Qty/Version
			282
79	51 724 05	Level regulator unit US/CDN	1
	79,1 410 840	Contact pin	1
	79,2 410 839	Socket contact	1
	79,3 410 873	Cable lug UL/CSA 0.5-1.65 MM2	1
	79,4 410 842	Insulating sleeve	1
	79,5 410 843	Insulating sleeve 1,5 - 2,5 MM2	1
	79,6 410 868	Level switch	1
	79,7 410 370	Plain washer	1
	79,8 51 278 00	Bending protection	1
	79,9 410 367	Gland screw	1
79	51 726 03	Level regulator unit EU	1
		Capacitor unit 50Hz 220V - 240V 1-phase Float switch Not CSA approved	
	79,1 410 840	Contact pin	1
	79,2 410 839	Socket contact	1
	79,3 410 873	Cable lug UL/CSA 0.5-1.65 MM2	1
	79,4 410 842	Insulating sleeve	1
	79,5 410 843	Insulating sleeve 1,5 - 2,5 MM2	1
	79,6 410 774	Level switch	1
	79,7 410 370	Plain washer	1
	79,8 51 278 00	Bending protection	1
	79,9 410 367	Gland screw	1
79	51 724 05	Level regulator unit US/CDN	1
		Capacitor unit 60Hz 220V - 240V 1-phase Float switch CSA approved	
	79,1 410 840	Contact pin	1
	79,2 410 839	Socket contact	1
	79,3 410 873	Cable lug UL/CSA 0.5-1.65 MM2	1
	79,4 410 842	Insulating sleeve	1
	79,5 410 843	Insulating sleeve 1,5 - 2,5 MM2	1
	79,6 410 868	Level switch	1
	79,7 410 370	Plain washer	1
	79,8 51 278 00	Bending protection	1
	79,9 410 367	Gland screw	1
80	410 077	Cable clamp STAINLESS STEEL, CR	1

Pos. No	Part. No	Denomination	Qty/Version	
			282	
82	410 014	Plain washer A2-170HV M8	2	
83	50 021 37	Hexagon nut M8-A4-70	2	
84	50 884 00	Cover	1	
85	410 015	O-ring 79.2X5.7-NBR	1	
86	50 020 00	Hex.socket hd screw M6X20-A2-70	2	
87	50 020 00	Hex.socket hd screw M6X20-A2-70	Earth (ground) for float switch	1
90	50 100 00	Plug contact	Plug Contact 3-phase 50 Hz 380V - 415V Supply connection CEE 5-PLUG 16A	1
90	410 038	Plug contact	Plug Contact 1-phase 60 Hz - 250V Supply connection Plug NEMA 6-15 15A 250V	1
90	410 042	Plug contact	Plug Contact 1-phase 50 Hz 220V - 240V Supply connection CEE 3-PLUG 16A	1
90	410 035	Plug contact	Plug Contact 1-phase 50 Hz - 250V Supply connection Plug T12 SEV1011 L+N+PE, 250 V 10 A	1
91	131 040	Motor cable subcab	Starter (Phase shifter) 3- phase 50/60 Hz 220V - 575V Current range 0 - 16A Cable type: SUBCAB 4G1,5	*
91	410 065	Motor cable subcab	Starter (Phase shifter) 3- phase 50/60 Hz 220V - 575V Current range 0 - 16A Cable type: SUBCAB 14AWG/4	*
92	50 102 00	Phase shifter		1
93	51 735 00	Sticker		1
94	51 735 01	Sticker		1
100	410 056	Insulating hose D=14 MM	Power cable SUBCAB 3G1,5 10 - 11mm L= 20m Supply connection: Plug 532.1U	*
100	132 354	Insulating hose D=20 MM	Power cable x 1 SUBCAB 12AWG/4 17 - 18mm L= 16m	*
101	50 127 04	Plain washer (10)-22 MM		1
102	410 727	Seal sleeve (10)-12 MM	Power cable SUBCAB 3G1,5 10 - 11mm L= 20m Supply connection: Plug 532.1U	1
102	410 728	Seal sleeve (12)-14 MM	Power cable SUBCAB 4G2,5 12,5 - 13,5mm L= 20m	1
102	410 729	Seal sleeve (14)-16 MM	Power cable SUBCAB 4G1,5+2x1,5 16 - 17mm L= 20m	1

Pos. No	Part. No	Denomination	Qty/Version	
			282	
102	410 730	Seal sleeve (16)-18 MM	Power cable x 1 SUBCAB 12AWG/4 17 - 18mm L= 16m	1
102	410 731	Seal sleeve (18)-20 MM	Power cable x 1 SUBCAB S3x2,5+3x2,5/3+S(4x0,5) 18 - 20mm L= 20m	1
103	50 926 00	Cable clip (10)-12 MM	Power cable SUBCAB 3G1,5 10 - 11mm L= 20m Supply connection: Plug 532.1U	1
103	50 926 01	Cable clip (12)-14 MM	Power cable SUBCAB 4G2,5 12,5 - 13,5mm L= 20m	1
103	50 926 02	Cable clip (14)-16 MM	Power cable SUBCAB 4G1,5+2x1,5 16 - 17mm L= 20m	1
103	50 926 03	Cable clip (16)-18 MM	Power cable x 1 SUBCAB 12AWG/4 17 - 18mm L= 16m	1
103	50 926 04	Cable clip (18)-20 MM	Power cable x 1 SUBCAB S3x2,5+3x2,5/3+S(4x0,5) 18 - 20mm L= 20m	1
104	50 932 00	Entrance flange		1
105	131 310	Hex.socket hd screw M6X25-A4-70		2
106	410 013	Plain washer 6-A4-170		2
107	50 020 00	Hex.socket hd screw M6X20-A2-70		1
108	51 714 01	Motor cable unit	Power cable SUBCAB 3G1,5 10 - 11mm L= 20m Supply connection: Plug 532.1U	1
108	51 714 02	Motor cable unit	Power cable SUBCAB 3G1,5 10 - 11mm L= 20m	1
108	51 714 05	Motor cable unit	Power cable SUBCAB 4G1,5 10,5 - 11,5mm L= 20m	1
108	51 714 10	Motor cable unit	Power cable SUBCAB 4G1,5+2x1,5 16 - 17mm L= 20m	1
108	51 714 06	Motor cable unit	Power cable SUBCAB 4G2,5 12,5 - 13,5mm L= 20m	1
108	51 714 03	Motor cable unit	Power cable SUBCAB 3G2,5 11 - 12mm L= 20m	1
108	51 714 04	Motor cable unit	Power cable x 1 SUBCAB 14AWG/3 13,2 - 14,2mm L= 16m	1
108	51 714 07	Motor cable unit	Power cable x 1 SUBCAB 14AWG/4 14,2 - 15,2mm L= 16m	1
108	51 714 08	Motor cable unit	Power cable x 1 SUBCAB 12AWG/4 17 - 18mm L= 16m	1

Pos. No	Part. No	Denomination	Qty/Version	
			282	
108	51 714 09	Motor cable unit	Power cable x 1 Screened 3x1,5 13,5 - 14,9mm L= 20m	1
108	51 714 18	Motor cable unit	Power cable x 1 SUBCAB S3x2,5+3x2,5/3+S(4x0,5) 18 - 20mm L= 20m	1
108	51 714 19	Motor cable unit	Power cable x 1 SUBCAB S3x2,5+3x2,5/3+S(4x0,5) 18 - 20mm L= 20m	1
111	140 152	Discharge connection	Discharge Connection DN 75 Hose 3" aluminium	1
111	130 890	Discharge connection	Discharge Connection DN 75 Thread : ISO G3A Outer aluminium	1
111	50 348 00	Discharge connection	Discharge Connection DN 75 Thread : NPT 3-8 Outer aluminium	1
112	50 022 26	Plain washer 10-A4-170		2
113	50 022 22	Hexagon nut M10-A4-70		2
114	140 366	O-ring 56.52X5.34 NBR		1
125	-	Zinc anode kit		1
800	51 731 00	O-ring kit	Contains all O-rings with position numbers in the exploded view.	1
801	51 095 00	Anode unit		1
900	51 734 00	Basic repair kit		1











Grindex  
Gesällvägen 33  
174 87 Sundbyberg  
Sweden  
Tel: +46-8-606 66 00  
Fax: +46-8-745 53 28  
[www.grindex.com](http://www.grindex.com)

Visit our Web site for the latest version of this document  
and more information

The original instruction is in English. All non-English  
instructions are translations of the original instruction.

© 2012 Grindex